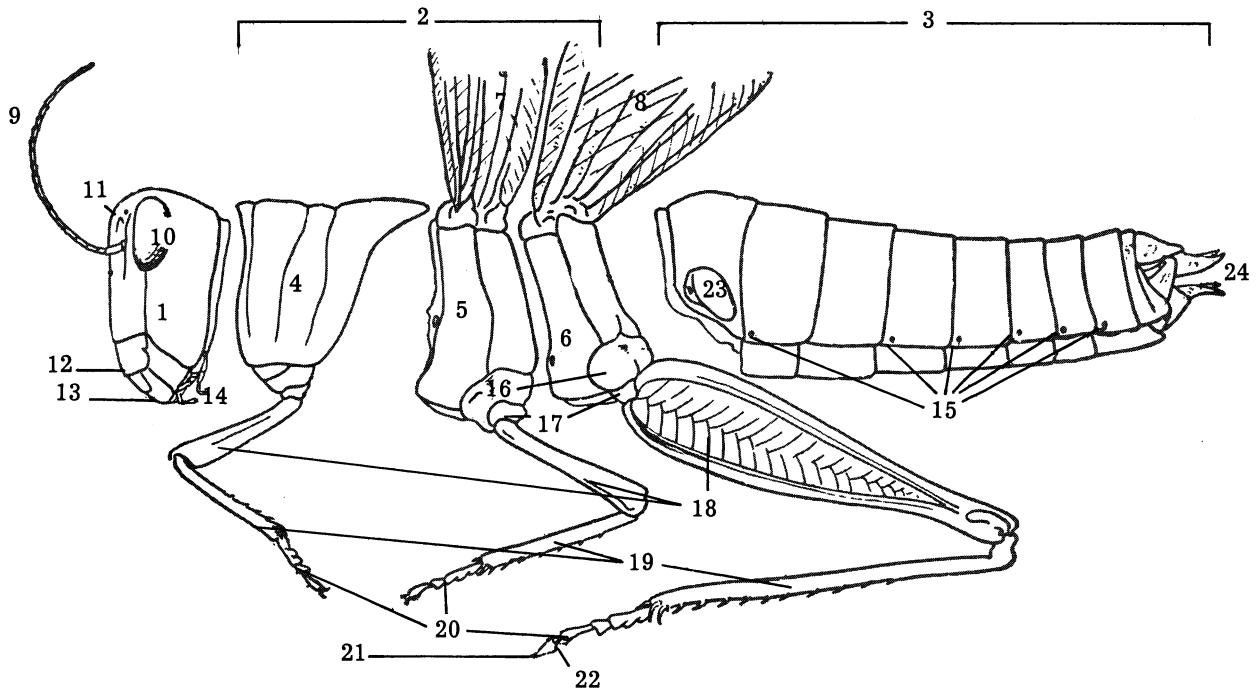


# The Parts of a Grasshopper



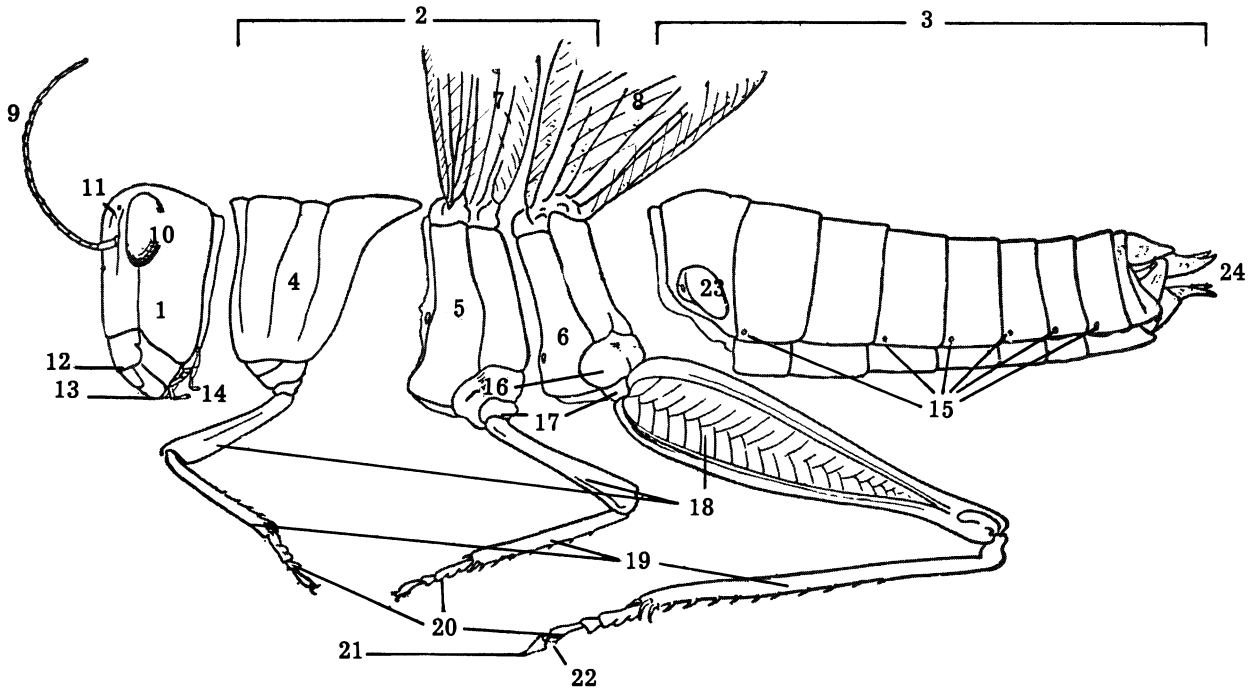
## Key

- |  |   |
|--|---|
| 1. <i>Head</i> — the first body region.  | 18. <i>Femur</i> — usually the largest part of the leg.                             |
| 2. <i>Thorax</i> — the middle region of the body.  | 19. <i>Tibia</i> — the fourth part of the leg a little more slender than the femur. |
| 3. <i>Abdomen</i> — the last body region.  | 20. <i>Tarsus</i> — the “foot” consisting of several segments.                      |
| 4. <i>Prothorax</i> — the first region of the thorax supporting 1 pair of legs.  | 21. <i>Claws</i> — arise from the last tarsal segment.                              |
| 5. <i>Mesothorax</i> — the middle region of the thorax supporting the first pair of wings and the middle pair of legs. | 22. <i>Pulvillus</i> — cushion-like structure on the lower surface of the tarsus.   |
| 6. <i>Metathorax</i> — the last region of the thorax supporting the second pair of wings and the third pair of legs.   | 23. <i>Ear (tympanum)</i> — used for “hearing.”                                     |
| 7. <i>Fore wing</i> — parchment like in the case of the grasshopper.   | 24. <i>Ovipositor</i> — egg laying appendage.                                       |
| 8. <i>Hind wing</i> — used for flight in the case of the grasshopper.  |   |
| 9. <i>Antenna</i> — insects have 1 pair.   |   |
| 10. <i>Compound eye</i> — one on each side of the head.  |   |
| 11. <i>Ocellus</i> — there are three located on the front of the head.   |   |
| 12. <i>Clypeus</i> — a “flap” just above the labrum.   |   |
| 13. <i>Labrum</i> — the movable “upper lip.”   |   |
| 14. <i>Palpi</i> — used to handle food.  |   |
| 15. <i>Spiracles</i> — openings of breathing tubes.  |   |
| 16. <i>Coxa</i> — the segment of the leg nearest the body.   |   |
| 17. <i>Trochanter</i> — the second part of the leg.  |   |

## Suggestions to Group Leader:

1. Give each member one copy of this lesson and let him study the parts.
2. Make a game of it. Divide the club into 2 teams. Turn to back side. Ask members of each team alternately to name parts as you call the number.
3. At a second meeting, have members study the picture again, then have them turn the sheet over and write the correct number in the blank in front of each part. Advanced members might fold the sheet and write name of part next to the number.
4. Catch grasshoppers and have the members point out the parts on a real specimen.

# The Parts of a Grasshopper



- |                 |                 |                 |                     |
|-----------------|-----------------|-----------------|---------------------|
| .... Hind wing  | .... Fore wing  | .... Labrum     | .... Ear (tympanum) |
| .... Thorax     | .... Mesothorax | .... Palpi      | .... Spiracles      |
| .... Clypeus    | .... Antenna    | .... Tibia      | .... Prothorax      |
| .... Claws      | .... Tarsus     | .... Coxa       | .... Pulvillus      |
| .... Trochanter | .... Ocellus    | .... Ovipositor | .... Head           |
| .... Metathorax | .... Abdomen    | .... Femur      | .... Compound eye   |

Prepared by LLOYD E. ADAMS, entomology extension, and RICHARD K. SPRENKEL, graduate assistant in entomology.