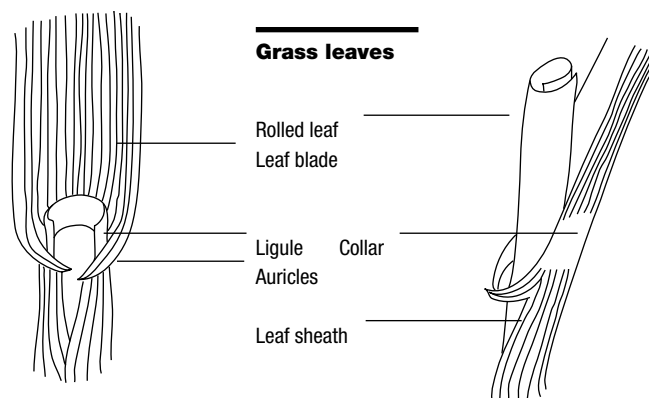


KEY FOR IDENTIFYING COMMON GRASSY WEED SEEDLINGS IN PENNSYLVANIA

A = annual, **P** = perennial, **WA** = winter annual

1. Stem triangular, solid, three ranked leaves.....YELLOW NUTSEDGE, *Cyperus esculentus*, **P**
 1. Stem flat to round, hollow, two ranked leavesGRASSES, *Gramineae* spp.
 - A. Auricles present.....QUACKGRASS, *Agropyron repens*, **P**
 - A. Auricles absent
 1. Ligule absent.....BARNYARDGRASS, *Echinochloa crusgalli*, **A**
 1. Ligule present
 2. Ligule a fringe of hairs
 3. Sheath round with overlapping margins
 4. Sheath covered with long hairsWITCHGRASS, *Panicum capillare*, **A**
 4. Sheath smooth
 5. Margins of the sheath hairy
 6. Leaf blade rough above, smooth to somewhat rough belowGREEN FOXTAIL, *Setaria viridis*, **A**
 6. Leaf blade covered with short hairs above, smooth and keeled belowGIANT FOXTAIL, *Setaria faberii*, **A**
 5. Margins of the sheath not hairy
 6. Collar hairy on the marginsSTINKGRASS, *Erogrostis cilianensis*, **A**
 6. Collar not hairy on the marginsFALL PANICUM, *Panicum dichotomiflorum*, **A**
3. Sheath distinctly flattened, smooth, with overlapping margins
 4. Collar divided, not hairy on the marginsBRISTLY FOXTAIL, *Setaria verticillata*, **A**
 4. Collar not divided, hairy on the margins
 5. Leaf blade has a few long hairs near the base.....YELLOW FOXTAIL, *Setaria glauca*, **A**
 5. Leaf blade smoothSANDBUR, *Cenchrus pauciflorus*, **A**
2. Ligule membranous
 3. Sheath round to oval
 4. Sheath smooth, split with overlapping margins
 5. Leaf blade smooth above and below, midrib white above, prominent below
 6. Thick, white rhizomes just below soil surface.....JOHNSONGRASS, *Sorghum halepense*, **P**
 6. No rhizomes, fibrous root system like corn.....SHATTERCANE, *Sorghum bicolor*, **A**
 5. Leaf blade rough above and below, midrib not white or prominent below
 6. Short, scaly rhizomes at or below soil surface.....WIRESTEM MUHLY, *Muhlenbergia frondosa*, **P**
 6. No short, scaly rhizomes at or below soil surfaceNIMBLEWILL, *Muhlenbergia schreberi*, **P**
 4. Sheath hairy, closed to near the top
 5. Sheath short, hairy.....CHEAT, *Bromus secalinus*, **A** or **WA**
 5. Sheath densely soft, white, hairy, frequently purplishDOWNY BROMEGRASS, *Bromus tectorum*, **A** or **WA**
3. Sheath distinctly flattened, split with overlapping margins
 4. Sheath smooth or sparsely hairy
 5. Leaf blade smooth above, smooth and keeled below, tip boat-shaped.....ANNUAL BLUEGRASS, *Poa annua*, **A** or **WA**
 5. Leaf blade smooth above, a few hairs near base; smooth, keeled belowSMALL CRABGRASS, *Digitaria ischaemum*, **A**
 4. Sheath hairy
 5. Leaf blade long, hairy near the base above, smooth belowGOOSEGRASS, *Eleusine indica*, **A**
 5. Leaf blade hairy above and below, ligule often reddish or purplishLARGE CRABGRASS, *Digitaria sanguinalis*, **A**