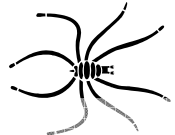
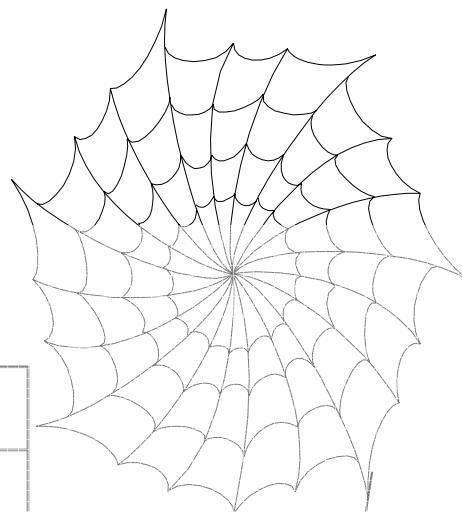


CLOVERBUDS



Spiders



1	A	N	A	C	H	N	I	D	2	S
---	---	---	---	---	---	---	---	---	---	---

P

3	S	P	I	D	4	E	R	L	I	N	G	S
---	---	---	---	---	---	---	---	---	---	---	---	---

I

N

G

N

H

5	W	E	B
---	---	---	---

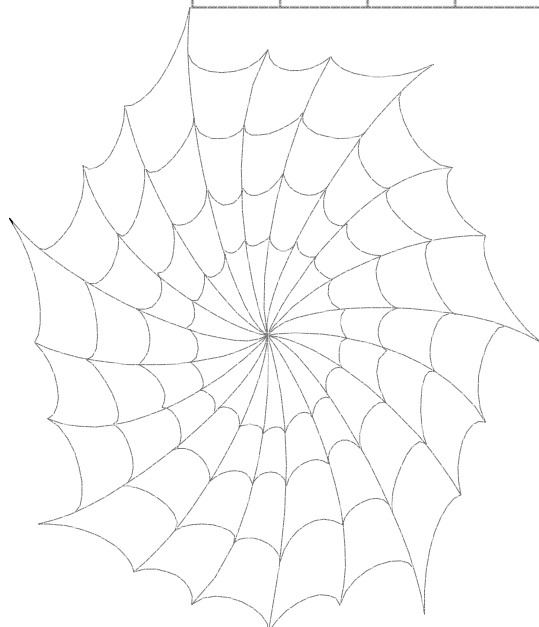
T

R

E

6	T	W	O
---	---	---	---

S



Across

1. WHAT SPIDERS ARE
3. BABY SPIDERS
5. USED TO CATCH INSECTS TO EAT
6. NUMBER OF MAIN BODY PARTS

Down

2. SPECIAL WEB MAKING ORGAN
4. NUMBER OF LEGS

