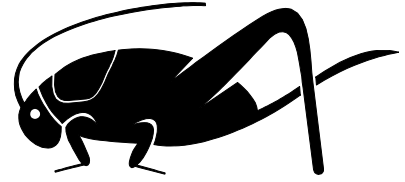




# CLOVERBUDS INSECTS

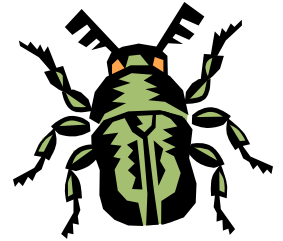


Look for the following hidden words.  
They are hidden **left to right** and **top to bottom**.



HEAD  
THORAX  
ABDOMEN  
SIX LEGS

EXOSKELETON  
METAMORPHOSIS  
INSECTS  
ANTENNA



A	O	Y	D	S	I	X	L	E	G	S	U	N
M	E	T	A	M	O	R	P	H	O	S	I	S
L	X	F	A	B	D	O	M	E	N	S	N	E
E	X	O	S	K	E	L	E	T	O	N	D	I
C	E	U	T	L	G	Q	Q	M	B	W	G	N
F	D	D	H	I	V	D	O	H	B	I	Z	S
U	X	I	O	Q	L	D	K	E	O	Q	H	E
C	W	B	R	H	H	N	L	A	W	H	E	C
O	F	S	A	A	N	T	E	N	N	A	A	T
D	E	D	X	J	G	V	K	P	D	S	D	S

