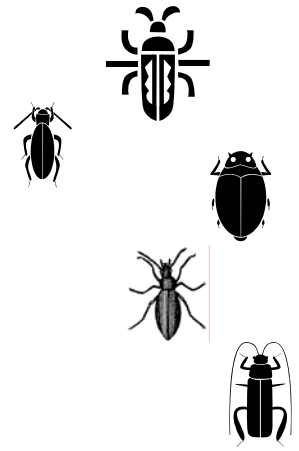


# CLOVERBUDS WORD SEARCH



C	A	T	E	R	P	I	L	L	A	R
I	E	G	S	W	F	H	L	D	J	Z
N	M	B	U	T	T	E	R	F	L	Y
S	W	S	W	V	C	I	R	Q	L	Z
E	E	V	E	M	G	E	U	G	P	I
C	B	Z	B	S	P	I	D	E	R	S
T	U	S	S	B	M	T	D	M	Q	R
S	G	D	N	W	Z	T	N	H	B	I
G	S	J	K	W	O	R	M	S	T	B

Look for the following hidden words.  
They are hidden **left to right** and **top to bottom**.

- BUGS
- BUTTERFLY
- CATERPILLAR
- WORMS
- SPIDERS
- WEBS
- INSECTS

